



mitsuli.co



+886 7-396-6000



mitsuli.com@msa.hinet.net



No. 105, Zhaoliang St, Sanmin District, Kaohsiung City, Taiwan 807

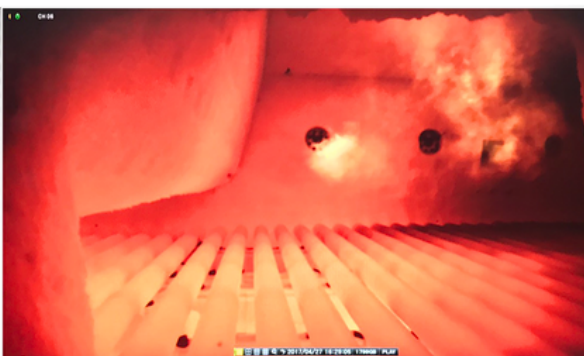
Industrial Surveillance Camera System

Heating Furnace Portable Camera System

Product Features:

It is widely used in metallurgy, steel, electricity, glass, building materials, machinery, cement kilns, metallurgical heating furnaces, power plant boilers, waste incinerators, petrochemical plants, and steel heating furnaces.

Oil, coal, and gas furnaces only require compressed air so that the camera lens can be directly extended into the stove (below 1000°C), continuously observing the heating and annealing of materials in the furnace.



MICS-7300-TXN-PT

Specification:

- 1/2.8" 3.21M PS CMOS sensor 3M pixels.
- Maximum frame rate 30fps @3M (2048x1536) 30fps.
- Streaming: Quadruple Stream (H.265, H.264, M-JPEG, JPEG).
- Built-in Micro SD/SDHC; video recording. ONVIF (Profile S) standard.
- Lens: customized length according to the thickness of the furnace wall.
- 3MP IP camera with heat-resistant housing, suitable for monitoring flames or materials inside furnaces, with compressed air cooling system resistant ambient temperature below 1000°C.
- Manual operation, adjustable the depth inside the furnace
- Lens view angle adjustable to 60° or 90° & monitoring up to 360°



※ The company will not notify you of changes in product specifications and appearance.